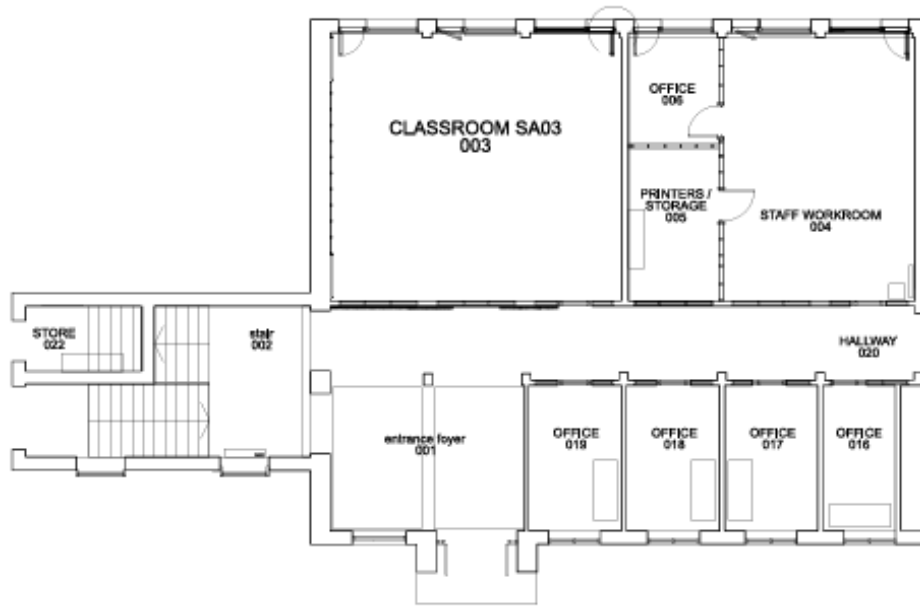
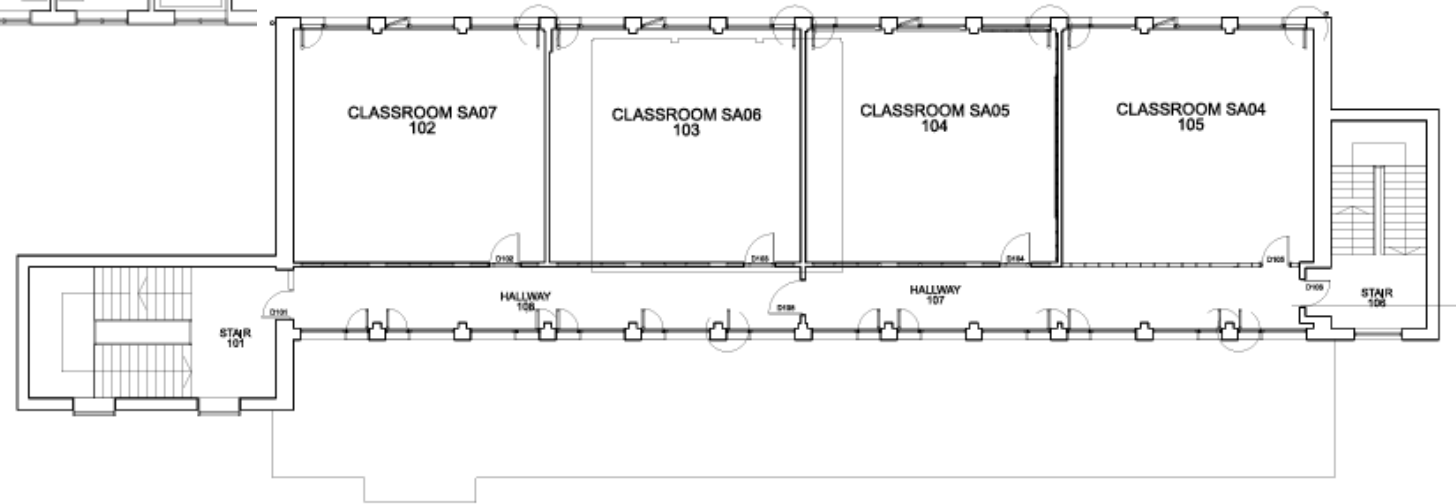


Study Block

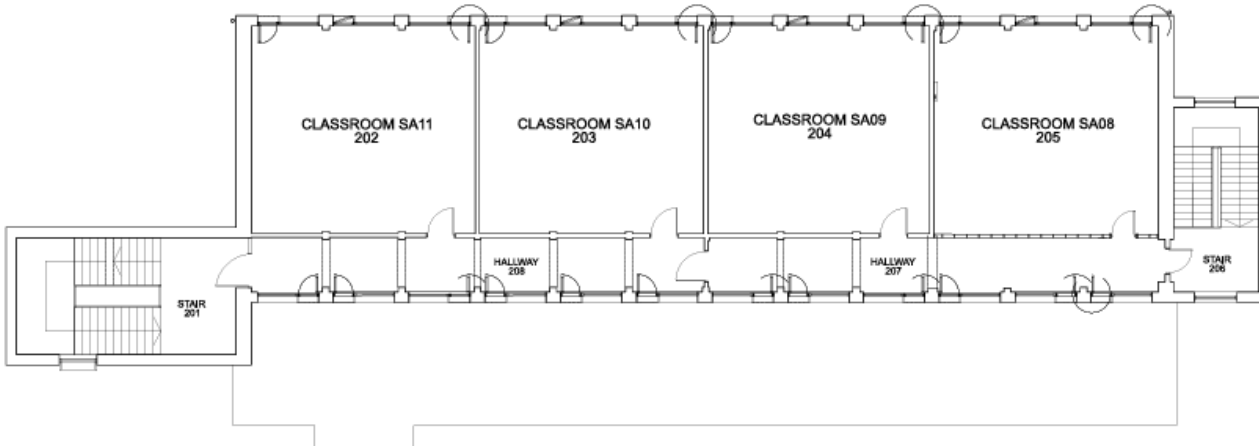
Ground floor



First floor



Second floor

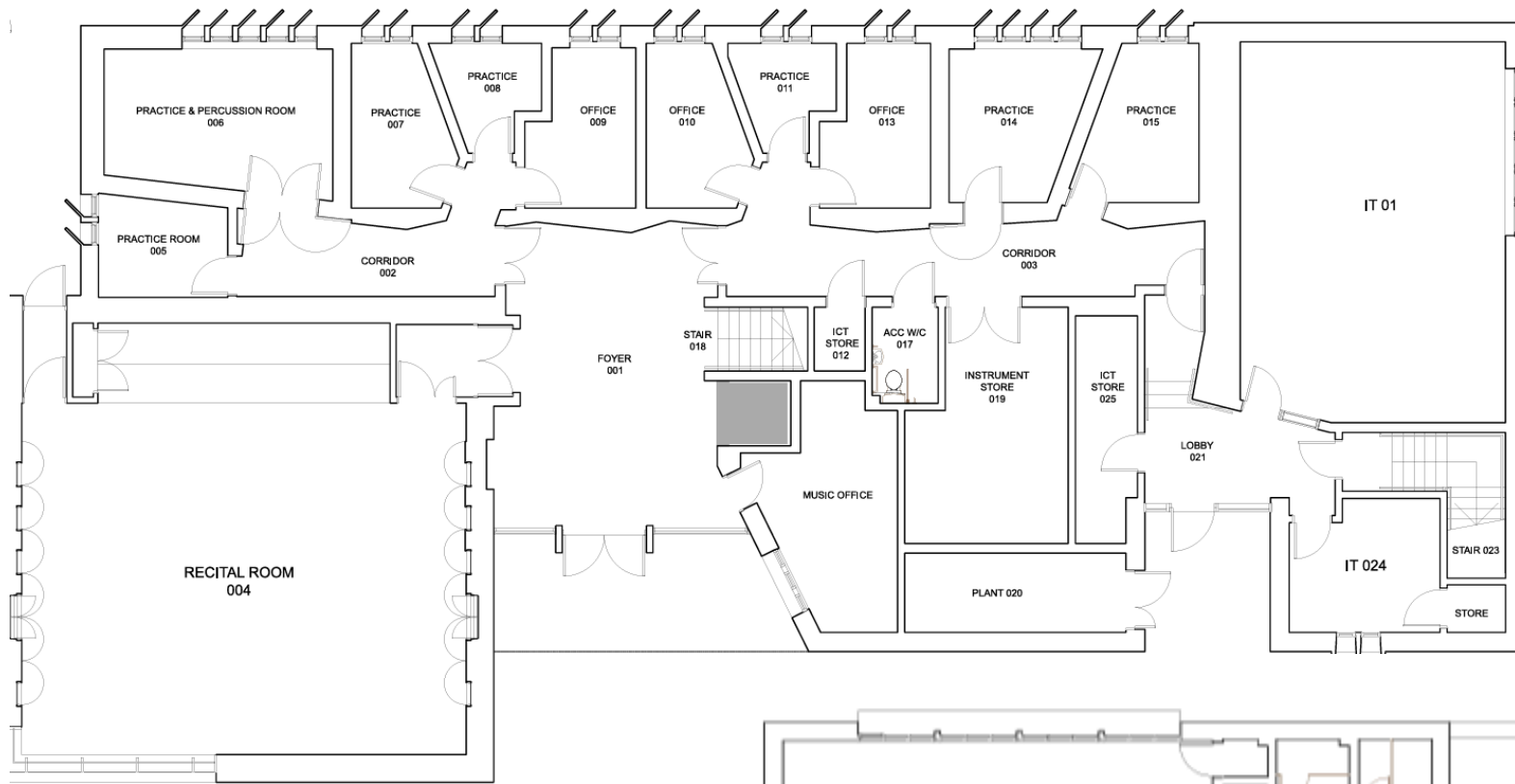


Study Block



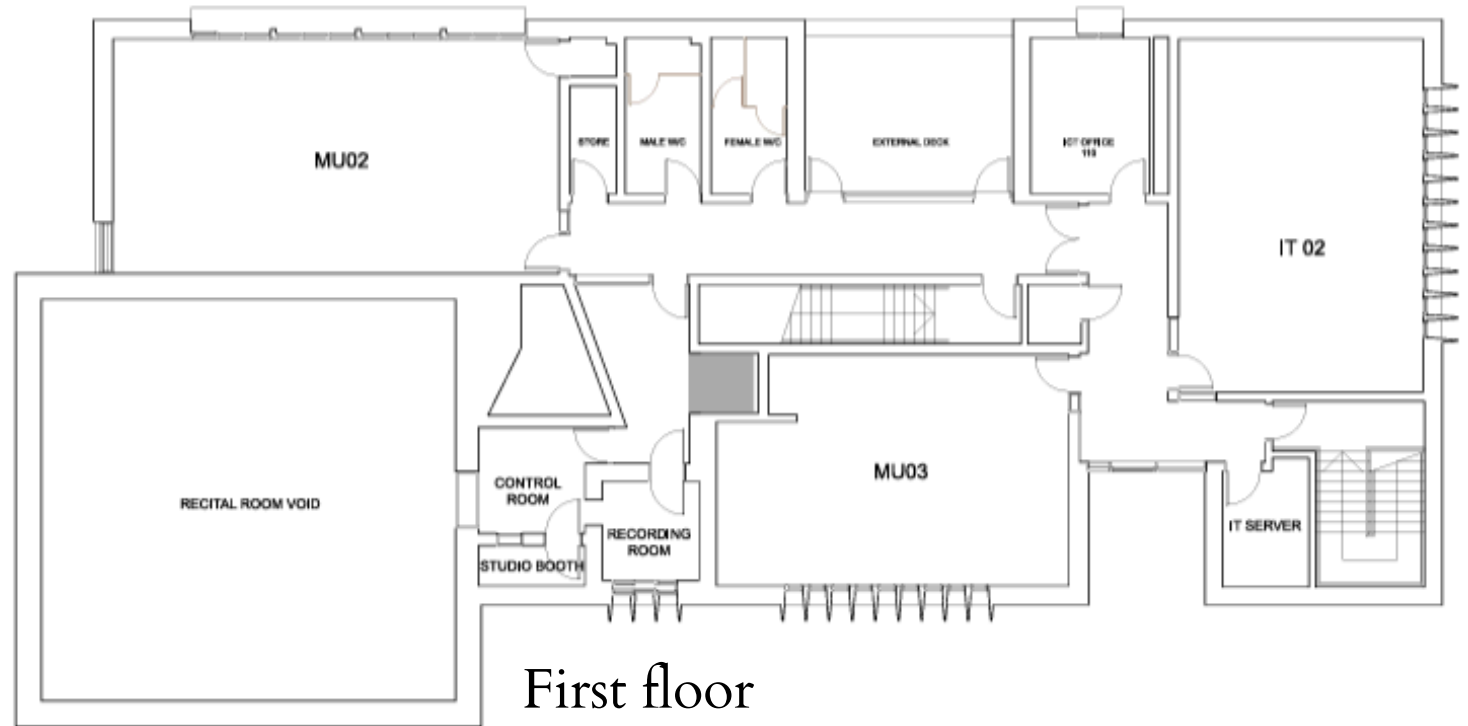
Nancye Harding Recital Hall





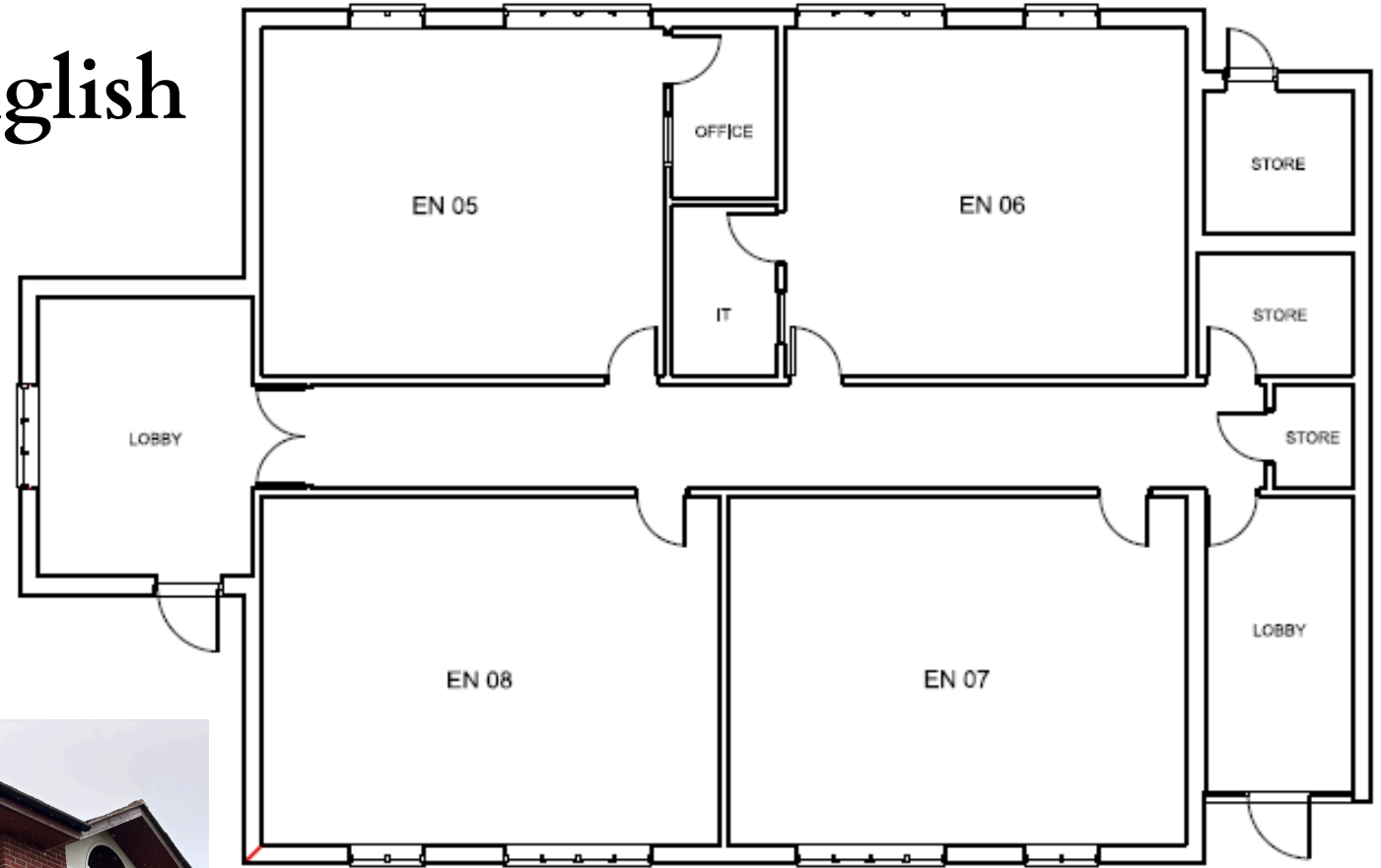
Ground Floor

Nancye Harding Recital Hall



First floor

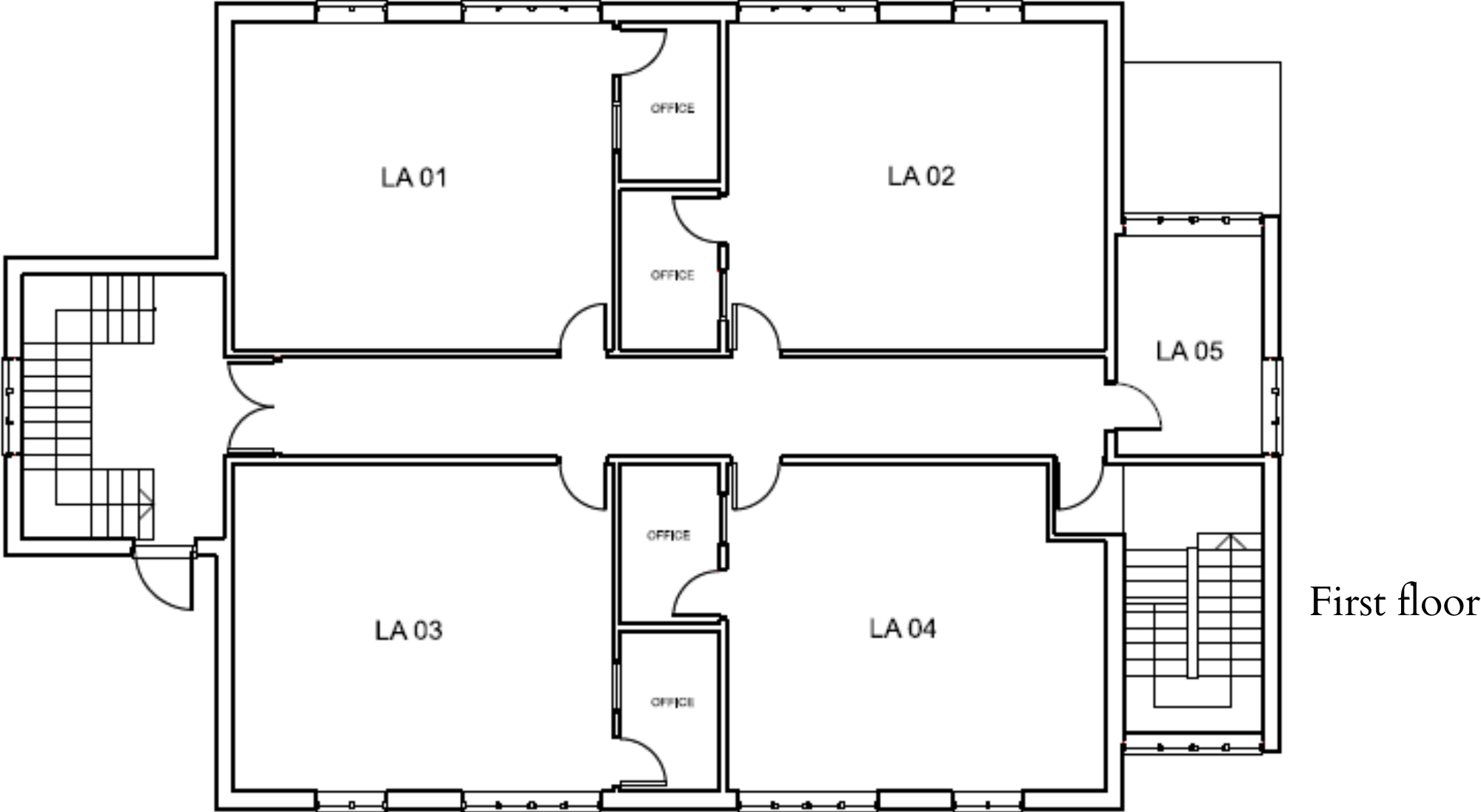
English



Ground floor



Modern Foreign Languages

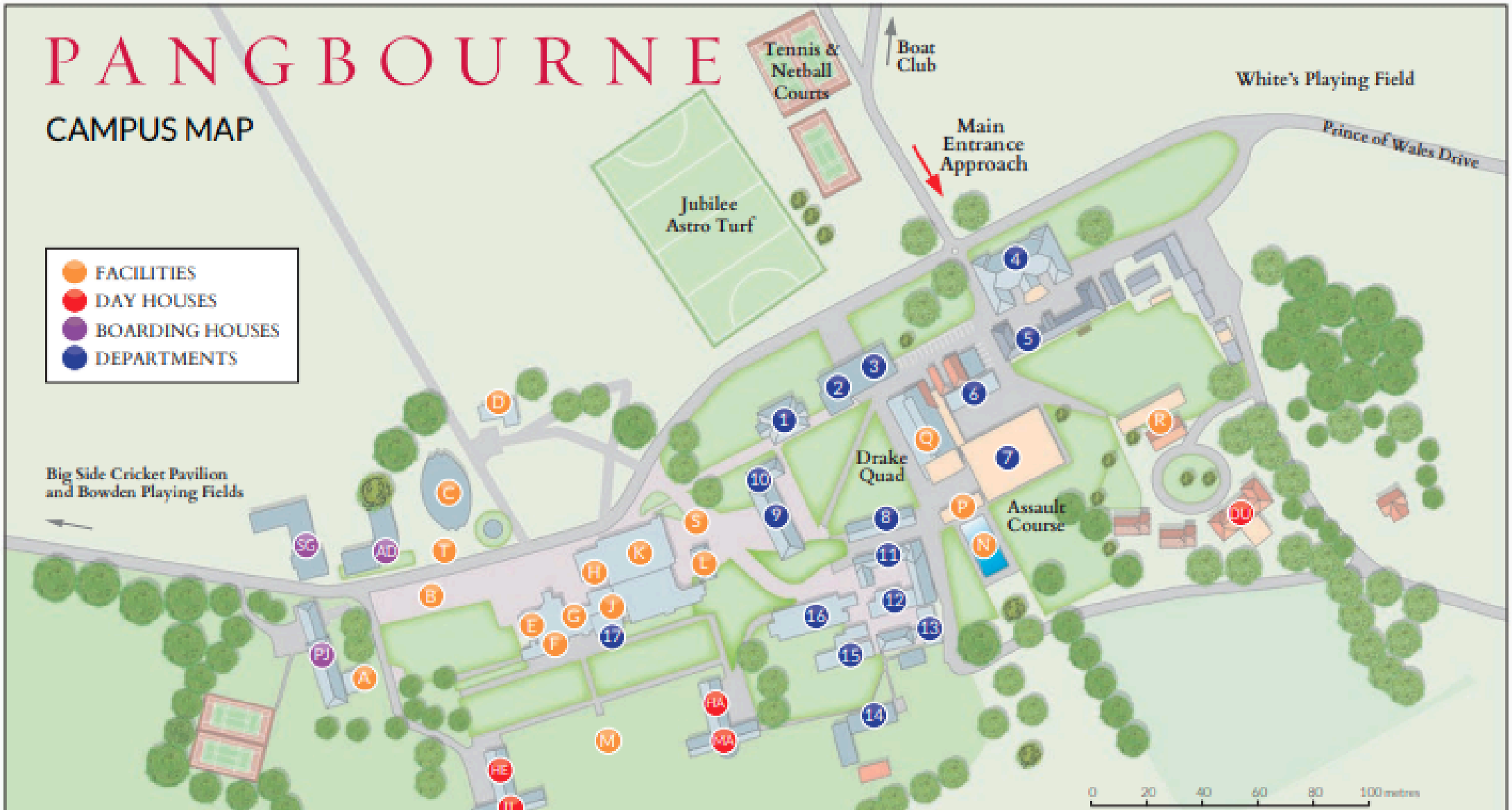


First floor

PANGBOURNE

CAMPUS MAP

- FACILITIES
- DAY HOUSES
- BOARDING HOUSES
- DEPARTMENTS



- | | | | | | |
|--|---|--|---|--|---|
| ● A Reception | ● G The Hudson Room | ● N Swimming Pool | ● DU Dunbar (Year 7 & 8) | ● 1 English, MFL, Media & Film Studies | ● 9 Library |
| ● B Parade Ground | ● H Shop | ● P Pool Office & Changing | ● HA Harbinger | ● 2 Music | ● 10 Economics & Business Studies |
| ● C Falkland Islands Memorial Chapel | ● J Sixth Form Centre | ● Q Drake Hall | ● HE Hesperus | ● 3 Computer Science | ● 11 Biology |
| ● D Café | ● K Mess Hall | ● R CCF | ● IL Illawarra | ● 4 Design & Technology | ● 12 Physics |
| ● E Devitt House | ● L Health Centre | ● S Mini Bus Stop | ● MA Macquarie | ● 5 Art & Photography | ● 13 Learning Support |
| ● F The Captain Lewis RN Room | ● M Devitt Lawn | ● T Coach Stop | ● AD Adelaide | ● 6 Geography | ● 14 Drama |
| | | | ● PJ Port Jackson | ● 7 Sports Hall | ● 15 Chemistry |
| | | | ● SG St George | ● 8 Rowing Land Training Centre | ● 16 Study Block: Maths, History & RS |
| | | | | | ● 17 Psychology and Sociology |